




Albufeira

green residences

Condomínio Privado

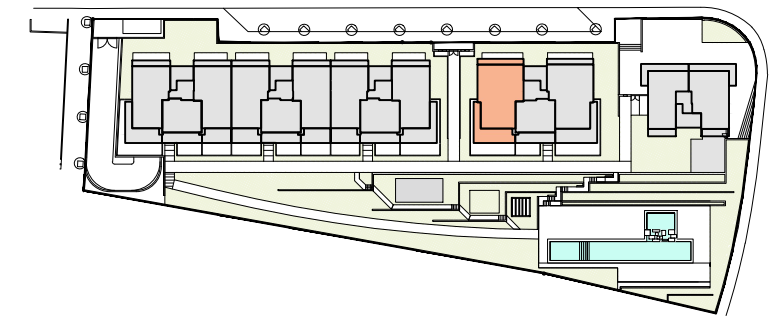
Edifício	D
Building	
Apartamento	1.A
Apartment	

Área Bruta Privativa: **116.96m²**
Private Area

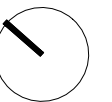
Área Varanda: **44.38m²**
Balcony Area

Área Bruta Total Privativa **161.34m²**
Total Private Area

Estacionamento **2**
Parking



Escala 1/75



Promotor
Development



Comercialização
Sales

